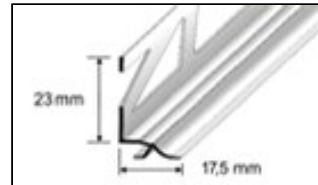
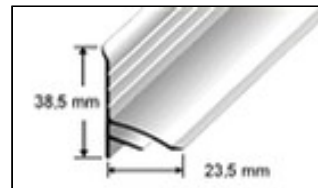
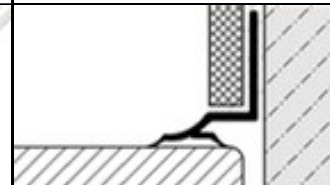


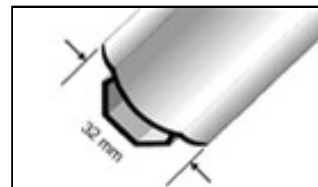
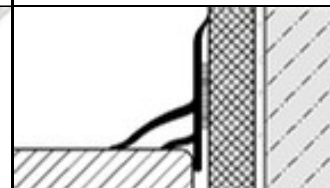
High-quality bath and shower corner profiles



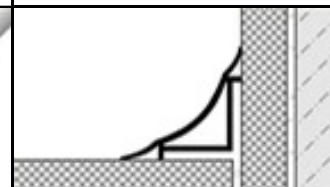
DCP 30..



DCP 40..



DCP 50..



Application:

DURACOVE-bathroom profiles from Dural are particularly suitable for corners of baths and shower basins. They are flexible and are manufactured in both wide and narrow versions. With DURACOVE type DCP 30.. bathroom profiles, the base is adhered beneath the tiles during the laying process. Loads are distributed evenly throughout the flooring and the foundations. DURACOVE bathroom profiles make cleaning simpler and ensure the utmost hygiene. Furthermore, DURACOVE bathroom profiles also prevent any contact that might lead to conduction of sound. They can also be used around doors and windows.

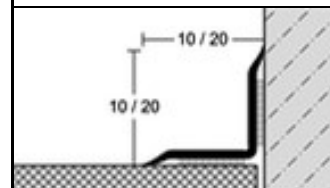
DURACOVE bathroom profiles type DCP 40.. or DCP 50.. can also be installed in rooms that have already been outfitted. A self-adhesive silicone strip (reference DCP-SK 4050) is provided near the top and bottom edges at the rear of the profile for this purpose. The flexible sealing lips must, however be left free to move. Profiles can be simply adhered to any suitably clean wall surface.

SANISTRIP / SANIFLEX are self-adhesive covering and sealing strips for covering junctions between tile surfaces and the edges of a bathtub or shower basin. SANISTRIP / SANIFLEX can also be used to cover other joints and junctions, e.g. around window or door frames, or to neatly cover perimeter edges (between floors and walls). Once the backing strip has been removed, SANISTRIP / SANIFLEX can be folded and adhered to any clean, dry surface and firmly pressed into place.

Important: DURACOVE-bathroom profiles or SANISTRIP / SANIFLEX profiles are not a substitute for proper sealing. Sealing work must be completed before they are used. For corners, the profiles need to be cut to mitre correctly and the mitre joint must be appropriately sealed with neutral bonding silicone.



Sanistrip / Saniflex



Material:

DURACOVE bathroom profiles consist of uniformly coloured PVC. SANISTRIP / SANIFLEX strips are made of soft PVC material with a self-adhesive coating on the back. SANISTRIP is supplied in 20 mm widths (10 x 10 mm after folding) and SANIFLEX is 40 mm wide (20 X 20 mm). Both are available in white, beige or grey.

Properties:

DURACOVE bathroom profiles are UV-resistant and free of emollients. SANISTRIP and SANIFLEX contain small amounts of emollient. They are resistant to the effects of all chemicals customarily used in tiling work. It is unlikely that the visible surfaces will be damaged with normal usage. However, whether or not the profiles can be used when other mechanical or chemical influences are present needs to be determined specifically for each individual application.

Maintenance:

DURACOVE and SANISTRIP / SANIFLEX profiles do not require any special maintenance. They are resistant to mould and bacteria. They can usually be cleaned at the same time as the surrounding tiles. Any alkali, neutral or mildly acidic cleaning agents may be used.

Data sheet

Name	Material / Colours	Dimensions
DURACOVE	PVC (white / beige / grey)	17,5 x 23 mm / 23,5 x 38,5 mm / 32 mm
SANISTRIP / SANIFLEX	PVC (white / beige / grey)	10 x 10 mm / 20 x 20 mm