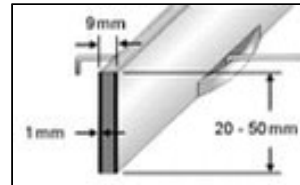
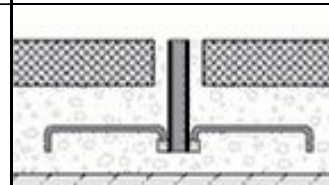


## Movement and expansion joints profile for ceramic tile floors Serie TL



Serie TL



### Application:

The DURAFLEX TL expansion joint profile from Dural has been designed specifically for avoiding compressive strain inside tiled floors. These profiles are used for separating stoneware tiling (clinker slabs, ceramic tiles, natural stone slabs). The expansion joint profiles are ideal for absorbing and cushioning compressive strains because of the soft core. This purposefully avoids cracks in the stoneware tiling.

Because of the hard outside metal section the DURAFLEX TL profiles also ensure efficient edge protection. The flexible shape also facilitates subsequent application of the profiles, it is possible to insert the profiles into subsequent on site manufactured expansion joints. If required, additional screed fixtures are available. DURAFLEX TL profiles are available of heights up to 50 mm.

### Material:

DURAFLEX TL profiles are vulcanised of a soft EPDM insert with two parallel metal strips. This produces an extremely solid connection between metal and EPDM expansion layer. The metal strips are optionally available in aluminium, brass or stainless steel. The insert consists of ethylene-propylene rubber (EPDM) and is available in different colours.

## Characteristic features:

DURAFLEX TL profiles are mainly used in industrial premises. The EPDM insert is acid- and lye-resisting and are extremely resistant against temperature, light and atmospheric influences.

DURAFLEX TL profiles made from **brass** are also appropriate for use in industrial plants. These profiles resist large-size loads and are mostly resistant against chemicals generating while tiling. Important: brass oxidizes when exposed to air, especially with high humidity. With time, the visible surface is covered with patina (oxide film) which changes its appearance.

DURAFLEX TL profiles made of **aluminium** can be used in areas where no unusual chemical reactions are to be expected. Careful handling of cement materials is required to avoid corrosion. Any residues of mortar, tile cement or joint cement are to be immediately removed from all visible surfaces because aluminium is sensitive to alkaline mediums. The profile is to be completely embedded into the sub-floor. This avoids the formation of cavities where alkaline water might accumulate.

DURAFLEX TL profiles made of **stainless steel** are mainly used in all areas subjected to major stresses because of chemicals and acids. Also the mechanical resistance steel profiles are used in the foodstuff industry, hospitals, swimming-pools and breweries.

The appropriation respect the resistance to mechanical and chemical stresses is to be checked for the individual case.

**Handling:**

1. Select DURAFLEX TL profile according to overall height.
2. Place profile flush with surface and embed. If required, provide the profile with screed fixtures. The sides have to be completely embedded in contact mortar.
3. The following tiles are to be joined flush with the profile and placed well embedded.
4. Completely filled with joint cement the space between tiles and profile.

**Care:**

DURAFLEX TL profiles do not require any special care. Dirt deposits can be removed with commercially available cleaning materials. The cleaning materials have to be free from hydrochloric acid and hydrofluoric acid and must not be abrasive.

## Data sheet

Material	Rubber insert	Height
Aluminium / Brass / Stainless steel	EDPM	20 – 50 mm