

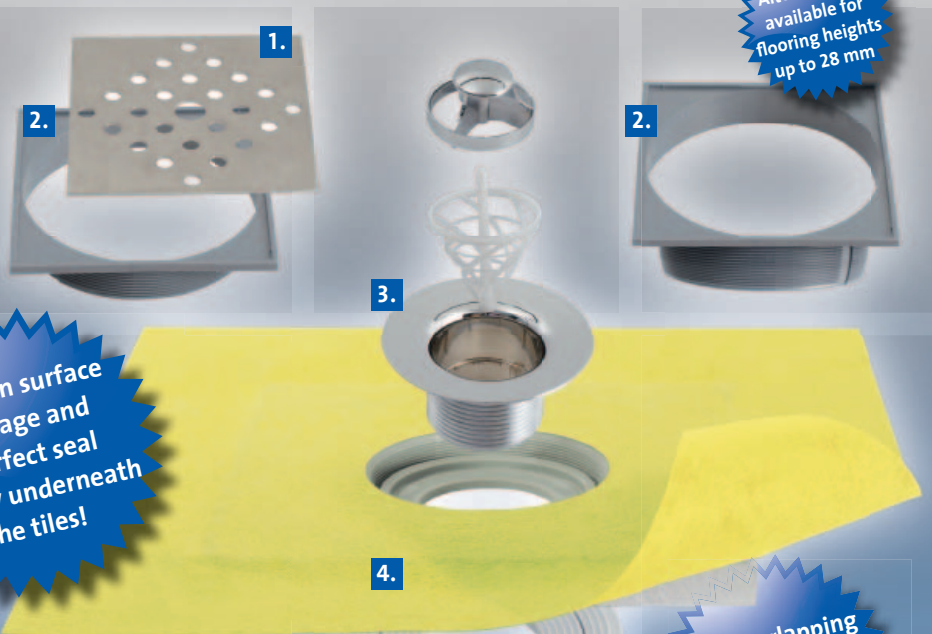
TI-DRAIN

Precision surface drainage and a perfect seal directly underneath the tiles

Quick and reliable drainage of floors is absolutely essential in all areas exposed to wet conditions. Wet floors increase the risk of slipping and can damage flooring in the long term.

TI-DRAIN is designed to counter these hazards and guarantee rapid drainage to keep floors dry. The surface of the TI-DRAIN board and sealing membrane creates a gradient around the drainage point, resulting in improved runoff of surface water.

DURAL



Precision surface drainage and a perfect seal directly underneath the tiles!

Alternatively available for flooring heights up to 28 mm

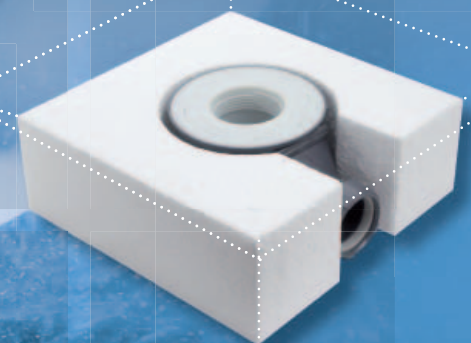
Uses for TI-DRAIN:

- Drainage of all tiled or natural stone surfaces
- Workshops
- Production areas
- Basement rooms
- Laundry rooms
- Bathrooms
- Garages
- Changing cubicles

TI-DRAIN comprises:

1. Brushed stainless steel drain cover grate
2. Screw-on PVC grate holder for a variety of flooring heights, 4 – 15 mm
3. Dirt trap with high-gloss cover
4. Board with sealing membrane for connecting to the composite seal
5. Rubber seal
6. Horizontal/vertical drain outlet 360° rotatable

The overlapping foil is firmly attached to the board!

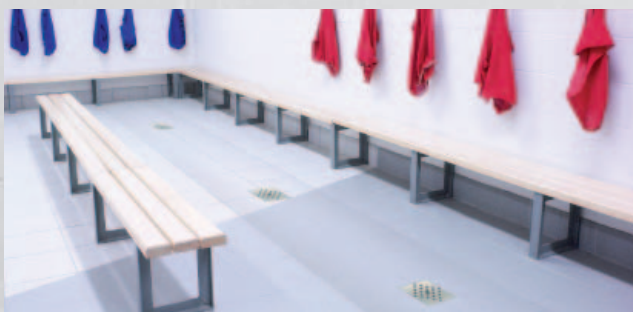
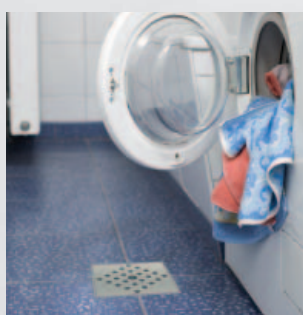


TI-DRAIN substrate element for professional drain positioning.

TI-DRAIN

Precision surface drainage and a perfect seal directly underneath the tiles

DURAL

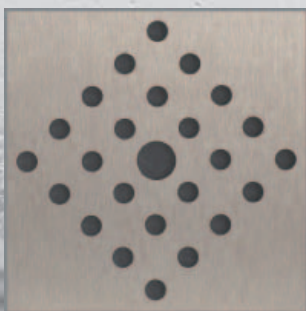


TI-DRAIN PRODUCT DATA

Drain system:	For horizontal and vertical use / 360° rotatable
Material (drain outlet attachment):	Polypropylene (PP)
Drainage capacity:	Horizontal = approx. 43 l/min. / vertical = approx. 52 l/min.
Grate holder:	105 x 105 mm, (plastic / height-adjustable 4 - 15 mm)
Drain cover grate:	V2A stainless steel brushed
Anti-odour seal height:	50 mm
Flow depth:	85 mm
Drain pipe outlet:	DN 40
Material (board):	Expanded polystyrene (EPS / 60 kg / m³)
Board size:	220 x 220 x 20 mm
Sealing membrane:	Polyethylene / polypropylene
Sealing membrane size:	360 x 360 mm
Material (substrate element):	Expanded polystyrene (EPS / 35 kg / m³)

Key benefits of TI-DRAIN:

- > Board for surface drainage
- > Vertical/horizontal drain outlet
- > Stainless steel drain cover grate
- > Grate holder for flooring thicknesses of between 4 and 15 mm
- > Rapid drainage
- > Fast and safe installation using substrate element



With the complements of:

DURAL GmbH & Co. KG

Südring 11
D-56412 Ruppach-Goldhausen
Tel. +49 [0] 26 02 / 92 61-0
Fax +49 [0] 26 02 / 92 61-50
info@dural.com
www.dural.com

10.11 Art.-Nr.: 46000077