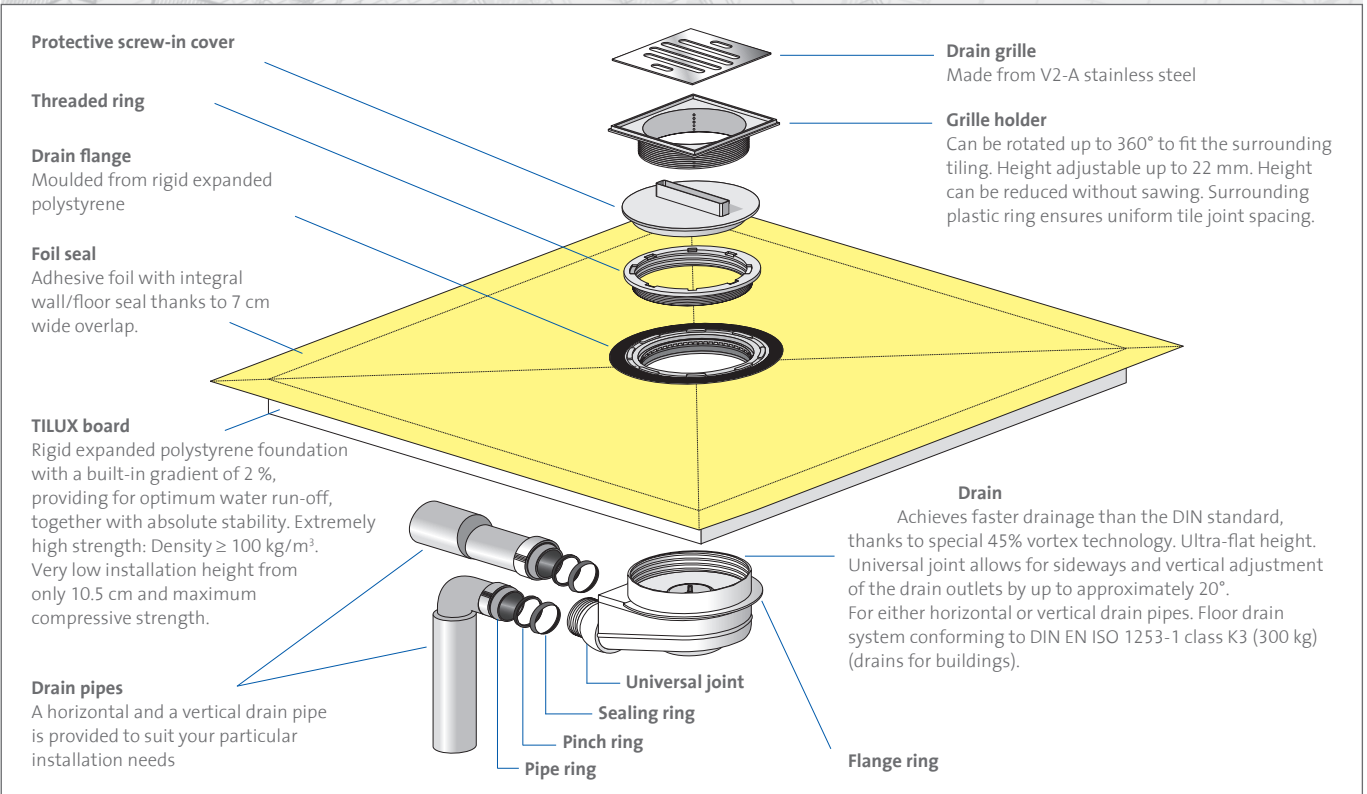


The ideal solution for floor-level showers



APPLICATION:

The TILUX tiled shower is an all-in-one solution that sets new standards. It can be installed easily, quickly and securely. The technology is highly efficient and all system components are perfectly adapted to each other.

Simply secure and watertight

Thanks to sophisticated technology and high-quality materials, your customers will be able to enjoy a shower system which provides both high durability and excellent sealing properties. The use of adhesive foil with an integral wall/floor seal provides the shower element with a reliable seal.

All-in-one solution for quick and easy installation

TILUX contains everything you need for installing a barrier-free shower - from the prefabricated welded-on drain flange to a foolproof screw-in system to connect the shower and drain element right up to a horizontal and vertical drain pipe. This simplifies your task and considerably reduces the installation time taken.

Maximum compression strength

TILUX can be safely covered with any type of tile, flag or mosaic tiles in compliance with DIN EN 14411, as well as with natural stone, and its ability to withstand even high point loading means that a wheelchair can be supported without additional reinforcement. Small mosaic tiles $\geq 20 \text{ mm}$ can be laid without any problem.

Maximum drainage capacity of $> 0.9 \text{ l/second}$



DURAL GmbH & Co. KG
Südring 11
D-56412 Ruppach-Goldhausen
Tel. +49 (0) 2602/9261-0
Fax +49 (0) 2602/9261-50
welcome@dural.de

Since the usage and finishing of the product is not under our control, we accept no liability for the success of our products as per the accompanying product data sheets and in accordance with our general terms and conditions of sale. The properties listed here represent no guarantee with respect to the eventual use of our products. We reserve the right to make changes due to technical advances. Any other technical information given in the course of a consultation must be confirmed in writing. Colours shown here are restricted by the printing techniques and may differ from those exhibited by the products themselves. We also reserve the right to make alterations to the product technology or design. Only the current version of this data sheet is valid. Such versions are accessible by anyone via the internet. The issue of the latest data sheet invalidates all those that have been published beforehand.

The ideal solution for floor-level showers

For both new and existing buildings

Ultra-flat installation height from only 10.5 cm. For all floor constructions in new and existing buildings.

No need to order extra parts

The TILUX all-in-one solution includes both a horizontal as well as a vertical drain pipe.

Height adjustable grille holder from 6 to 22 mm

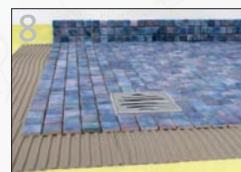
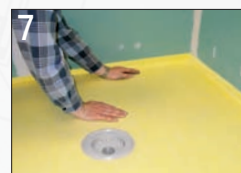
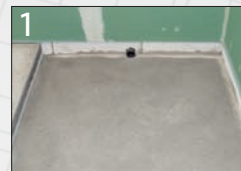
For easy and effortless installation.

HANDLING:

1. Make a recess in the screed the size of the TILUX board down to the level of the concrete floor.
2. Position the drain in the centre of the recess or, for rectangular formats, place it in an off-centre position and adjust it to the correct height. The installation height of the drain is the height of the existing screed minus approximately 5 cm (from the top edge of the screed to the flange ring of the drain).
3. Secure the drain with fast-binding mortar. Do not forget to attach the protective screw-in cover to prevent dirt from getting into the drain.
4. Apply a screed of cement mortar up to the level of the flange ring, and then compact it and level the surface. A thin footfall soundproofing mat can be fitted under the screed if required.
5. Apply C2-quality flexible mortar across the entire surface with a 10 mm serrated trowel.
6. Next apply mortar to the underside of the TILUX board over its full surface and immediately press it into the fresh bed of mortar. Then screw the threaded ring into the drain. The board must finish flush with the surface of the screed.
7. Adhere the overlapping sealing foil to the floor and the wall using flexible mortar.
8. Tiles can now be laid using the conventional thin-bed method. Even small-format tiles can be used.

PRODUCT DATA:

MATERIAL:	High pressure resistant EPS (polystyrene), density > 100 kg/m ³
SURFACE:	Integrated surface seal using PE/PE composite sealing membrane with a 5 cm overlap all round and a built-in 2 % surface gradient.
DRAIN FLANGE:	Supplied ready integrated and sealed in the board, Drain can be vertical or horizontal with DN 50 connection Anti-odour seal height: 50 mm to DIN 1986-100
DRAINAGE CAPACITY:	1.0 l/sec. (vertical) / 0.8 l/sec. (horizontal) to DIN EN 1253
DRAIN GRILLE:	Stainless steel 1.4301 / size 100 x 100 mm
GRILLE HOLDER:	Height adjustable from 6 - 22 mm and 360° rotatable
FORMATS:	50 x 50 x 3.5 cm / 90 x 90 x 4.0 cm / 100 x 100 x 4.2 cm / 120 x 120 x 4.5 cm / 120 x 90 x 4.0 cm / 150 x 90 x 4.0 cm (drain off-centre)



DURAL GmbH & Co. KG
 Südring 11
 D-56412 Ruppach-Goldhausen
 Tel. +49 (0) 2602/9261-0
 Fax +49 (0) 2602/9261-50
 welcome@dural.de