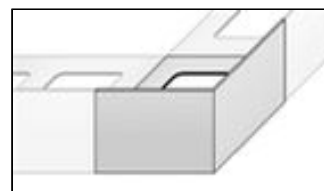
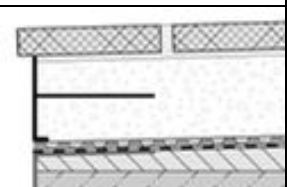
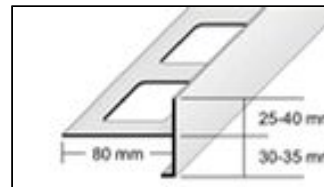
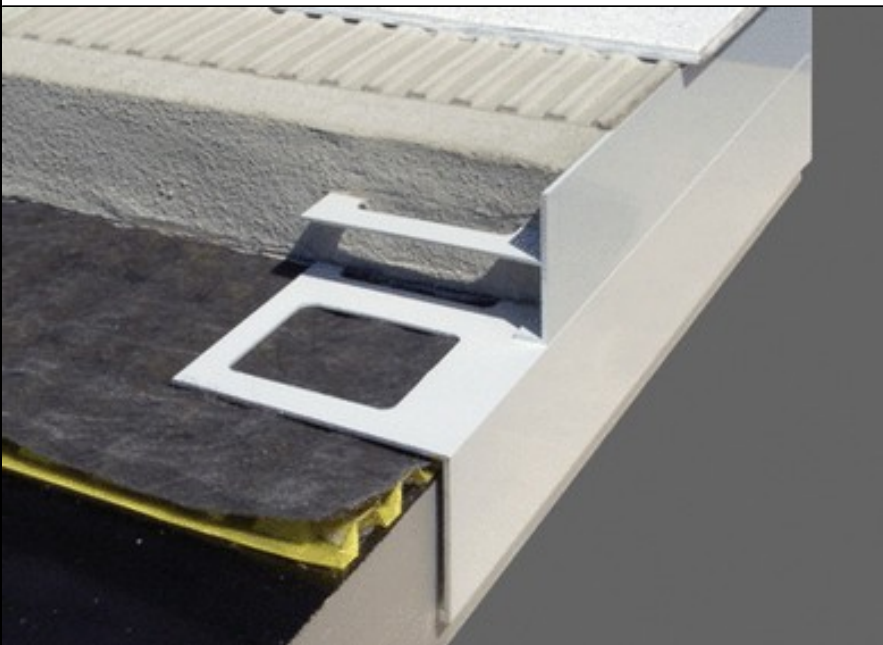
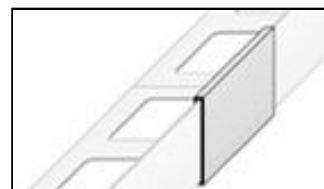


T-form balcony corner profile for balconies and terraces



Corner pieces



Connecting pieces

Application and function:

DURABAL balcony corner profiles with a T-shaped form are designed for use at the open edges of balcony or terrace flooring installations on conventional mortar beds. Such profiles make for a clean looking edge and protect open screed edges from weather and disintegration.

DURABAL-balcony corner profiles with the T-shaped form is fully embedded into the screed with its perforated square securing leg flush at the correct height then pulled away from the upper edge of the profile to the correct height. DURABASE DD should be laid between the bitumen seal of the balcony/terrace and the cement screed as drainage for the surface. This means that no water can collect within the screed or underneath it.

The profiles are connected together with profile binders and at the corners with special corner pieces. This attractively covers the necessary joints of about 2 mm.

If DURABASE CI mats are installed, the screed should be scraped away to 5 mm beneath the top edge of the profile. DURABASE CI decouples the tiling floor from the screed foundation thus neutralising physical and thermal tensions arising at installation time in the danger area between the screed surface and the tile. DURABASE CI also forms a sealing system in conjunction with the tiling, which conforms to building regulations for moderately or heavily stressed flooring surfaces.

Properties and usage:

No water may be allowed to collect in the screed layer in which DURABAL T-form balcony corner profiles are installed (surface drainage needs to be fitted). Highly alkaline aqueous solutions can attack aluminium. In some specific applications the usage of T-form balcony corner profiles with regard to chemical and mechanical resistance needs to be assessed.

Material:

DURABAL T-form balcony corner profiles are made of powder-coated aluminium and are available in four colours (beige, black, brown, grey). The powder coating of the aluminium profiles is colour-fast and resistant to UV and weathering. The visible surfaces should be protected from abrasion and mortar residues. Profile bindings and corner pieces are also available to supplement the range.

Care and maintenance:

Regular cleaning not only makes for the attractive appearance of aluminium or stainless steel profiles, it also reduces deposits (corrosion). All cleaning agents should be free of hydrochloric acid (e.g. cement remover) and hydrofluoric acid. Aluminium balcony corner profiles should be cleaned when necessary using pH-neutral cleaning agents (pH 6-8) with no abrasive additives. The manufacturers' product recommendations for the cleaning agents should be followed at all costs.

Data sheet

Material	Height	Contact legs
Aluminium powder coated	55 / 75 mm	80 mm