

SQUARELINE

1/3

Square-shaped profile for modern edging design

- Datasheet -



Application

SQUARELINE profiles from Dural are designed for dividing areas, protecting edges and for edging. They are square in profile and the equal dimensions on all four sides allow for corners to be highly attractive in appearance. They are ideal for use wherever walls need to meet the utmost aesthetic requirements.

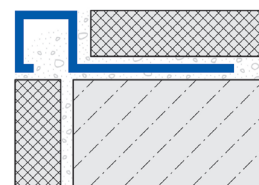
When SQUARELINE profiles' square format is aligned with tiled and natural stone surfaces, the results are first rate and elegant in design. Apart from their decorative attributes, they also provide perfect protection for corners and surface edges.

Material

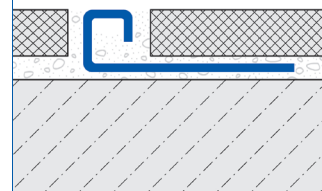
Aluminium profiles can be in any location where the environment is not expected to be too tough. To avoid staining (corrosion) of the profile surface care must be taken with cement materials. Since aluminium is sensitive to alkaline substances, any residues from mortar, tile adhesive or grout should be wiped from visible surfaces immediately. The profiles should be fully embedded in the adhesive layer. This prevents the creation of any pockets in which alkaline water solutions could collect (especially in areas where there is a lot of water present).

Anodised aluminium profiles are specially treated so that surfaces should not normally change. Visible surfaces, though, must nevertheless be protected from all cement materials. Damage can also occur due to grating or abrasive grout or other objects.

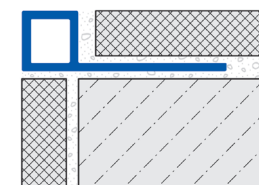
Aluminium



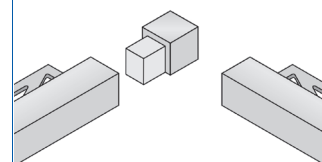
Stainless steel 304



PVC



Corner piece



DURAL GmbH

Südring 11

D-56412 Ruppach-Goldhausen

Tel. +49 (0) 2602/9261-0

Fax +49 (0) 2602/9261-50

info@dural.com

Square-shaped profile for modern edging design

- Datasheet -

Profiles made of stainless-steel are the ideal choice for sophisticated and appealing entrance areas. They also meet the highest requirements with regard to mechanical loading.

Stainless-steel profiles are used not only in homes, but in the food industry, hospitals, swimming pools, breweries and other applications where particularly exacting requirements must be met with regard to cleanliness, hygiene, resilience and chemical resistance. Note: Depending on the type and extent of chemical exposure, the use of type 1.4571 (V4A) stainless-steel is recommended.

PVC profiles offer a wide range of colours and can thus be perfectly matched to the colours of the tiling. N.B.: The use of coloured mortar with ultra fine colour pigments in conjunction with plastic profiles may result in permanent staining of the profiles. We recommend taking appropriate protective measures as a precaution.

Corner pieces provide a neat and technically accomplished solution for inside and outside corners, without having to cut and mitre the profiles. Use of the appropriate corner pieces even makes it possible to design corners in all three dimensions.

For all products and materials, the following applies: The suitability of the material with regard to the expected mechanical loading and chemical exposure must be investigated carefully in each individual case. The generally recognised rules of good engineering practice must always be observed!

Installation

1. Select the SQUARELINE profile appropriate to the tile thickness.
2. Apply tile adhesive with a serrated trowel.
3. Press the SQUARELINE profiles into the adhesive bed and align them correctly.
4. Trowel over the attachment base.
5. Press the tiles in firmly and align them in such a way that they are flush with the surface of the profiles. Lay tiles across the entire surface.
6. Use the matching inside and outside corner pieces.
7. Allow a gap of about 2–3 mm between the tiles and profile.
8. Fill the gap between the tiles and profile with grout.

Maintenance

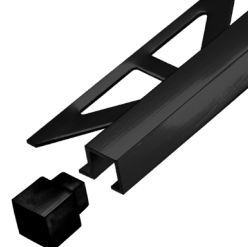
Profiles do not require any special care. They can easily be cleaned when necessary using clear, clean water with a few drops of washing up liquid. Cleaning agents must specifically be free of hydrochloric or fluoric acid and must not be abrasive. No cleaning agents containing solvents may be used in conjunction with PVC profiles. Observe the manufacturers' own maintenance instructions.

DURAL

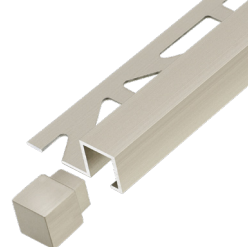
Aluminium high-gloss anodised
silver brushed



Aluminium anodised
black



Aluminium anodised
titanium



Stainless steel 304
silver high-gloss polished



DURAL GmbH

Südring 11

D-56412 Ruppach-Goldhausen

Tel. +49 (0) 2602/9261-0

Fax +49 (0) 2602/9261-50

info@dural.com

Square-shaped profile for modern edging design

- Datasheet -

Please note

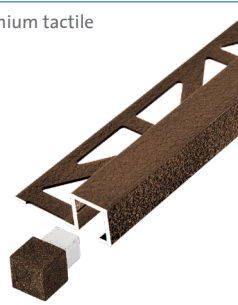
The usability with regard to mechanical and chemical load-bearing capacity must always be checked in each individual case. When laying and jointing our metal profiles, adhesive and jointing materials must be immediately with clear water and a soft sponge to prevent corrosion damage to the profile. Do not use any acidic (e.g. cement residue remover) or alkaline cleaning use acidic (e.g. cement residue remover) or alkaline cleaning agents in connection with all metal profiles. Clean with clear water and dry with a dry linen cloth.

For further information on material properties as well as cleaning and care, please refer to the „Service Data Sheet“.

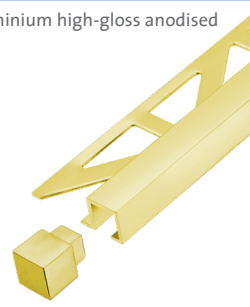
Product data

Material / Colour	Aluminium natural / anodised silver, titanium, black Aluminium high-gloss anodised silver, gold, titanium Aluminium high-gloss anodised brushed silver, titanium Aluminium tactile coated beige, brown, anthracite Aluminium powder coated / anodised RAL 0808005 sand, RAL 0006500 concrete grey, black matt Stainless steel brushed 304 natural, high-gloss polished, brushed Brass verchromt silver PVC white, jasmine, black, silver grey NOBLESSE Stainless steel 304 chrome pearlsilver velvet, pearl velvet, cerium mirror, black velvet, black mirror, aurum velvet, aurum mirror
Height of profiles	Aluminium 4,5 / 7 / 9 / 11 / 12,5 mm Stainless steel 304 9 / 10 / 11 / 12,5 mm Brass 9 / 11 mm PVC 7 / 9 / 11 mm NOBLESSE Stainless steel 304 chrome 7 / 9 / 11 mm
Length of profiles	250, 300 cm
Applications	Dividing, protective and edging profiles

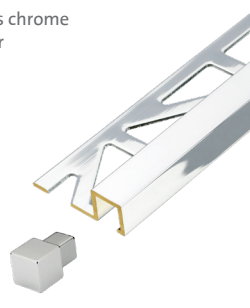
Aluminium tactile
brown



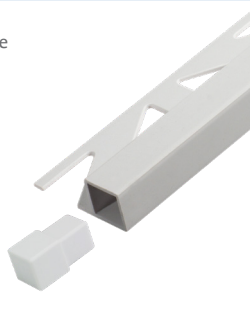
Aluminium high-gloss anodised
gold



Brass chrome
silver



PVC
white



DURAL GmbH

Südring 11

D-56412 Ruppach-Goldhausen

Tel. +49 (0) 2602/9261-0

Fax +49 (0) 2602/9261-50

info@dural.com